



# Liver resections and liver failure

Steven W.M. Olde Damink

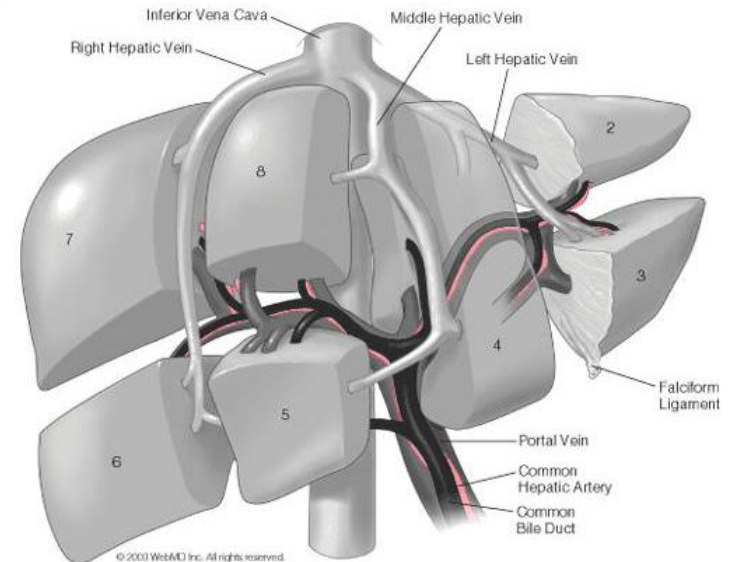
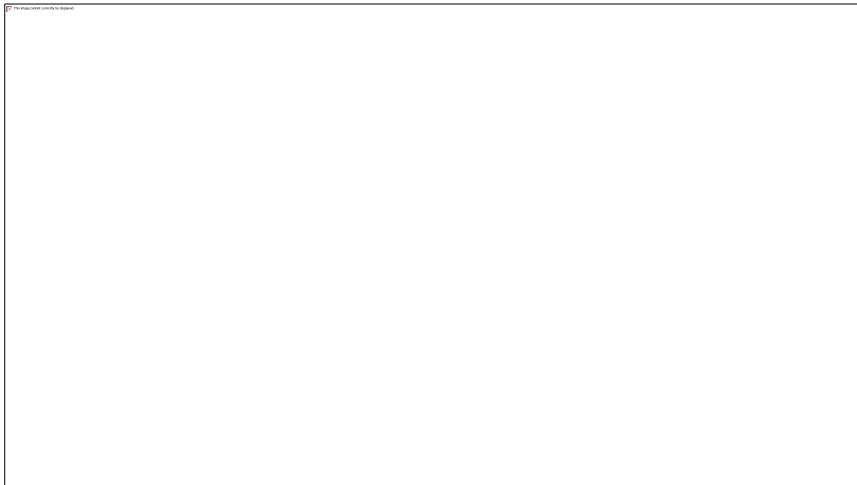


## Overview

- Postresectional liver regeneration – in short
- Postresectional liver failure (PLF)
  - Definition
  - Risk factors, Risk-analysis, Pathogenesis
- Prevention
- Current and future therapies

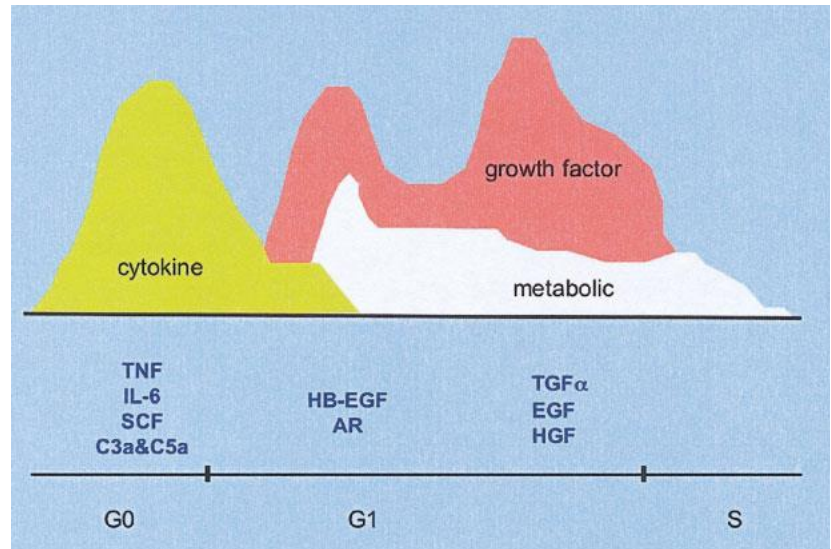
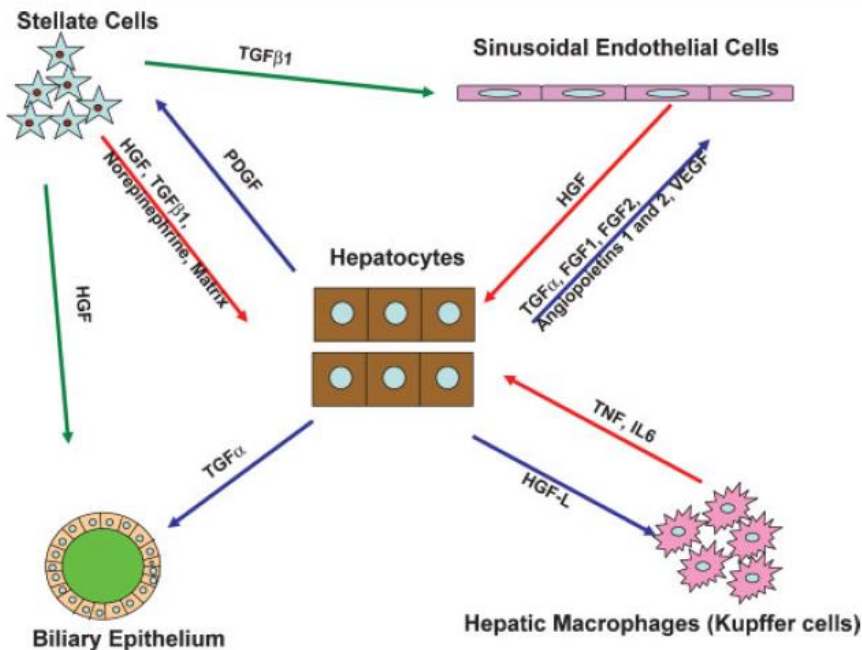
## Partial hepatectomy

- Preferred curative treatment!
- Malignant lesions (primary & secondary)
- Benign lesions



# Postresectional liver regeneration

- Liver regeneration starts immediately after resection
- Interplay parenchymal and non-parenchymal cells and driven by multiple signals



# Postresectional liver failure (PLF)



## Definition of PLF

- **Based on bilirubin and/or INR and/or other parameters**
- 50-50 criteria
  - Predicts death on ICU on postoperative day 5 when bilirubin  $>50\mu\text{mol/l}$  and PT  $<50\%$
- Peak bilirubin
  - Predicts liver-related death within 90 days after resection when bilirubin level  $>7.0\text{mg/dL}$
- Definition of ISGLS
  - Grade A, B, or C based on clinical symptoms and deviation in postoperative course, can predict postoperative mortality
  - Measured on or after postoperative day 5

**No consensus**

*Balzan, 2005  
Mullen, 2007  
Paugam-Burtz, 2009  
Rahbari, Surgery 2011*

## Definition of PLF

<b>Criterion</b>	<b>PPV</b>	<b>NPV</b>	<b>Measure</b>
"50-50 criteria"	29-54%	97-96%	Postoperative overall mortality on ICU
"Peak bilirubin"	32-40%	97-99%	Liver-related mortality within 90 postoperative days
"ISGLS definition"	21%	97%	Overall postoperative mortality

## PLF - Incidence

Autor	Year	Patients (n)	Morbidity (%)	PLF (%)	30 day mortality(%)	Overall mortality (%)
Schroeder	2006	587	32	32	8,5	n.a.
Balzan	2005	704	n.a.	3,8	n.a.	3,7
Poon	2004	820	30	3,2	2,7	3,7
Dimick	2004	16582	n.a.	n.a.	7,3	n.a.
Coelho	2004	83	45	7,2	8,4	n.a.
Imamura	2003	915	44	0,1	0	0
Jarnagin	2002	1803	45	5,5	n.a.	3
Alfieri	2001	254	26	4,2	n.a.	3,9
Akashi	2000	96	39	11,4	5,2	10,4
Belghiti	1999	747	22	1,2	n.a.	4,4



## Validation of *Peak bilirubin*

- **Multicenter**
  - Maastricht University Medical Center, Maastricht
  - The Royal Free Hospital, London
- Retrospective analysis of patient files, 2005 - 2012
- n = 956
  
- **Inclusion**
  - All patients undergoing liver resection
  - Independent of quality of background liver

## Validation of *Peak bilirubin*

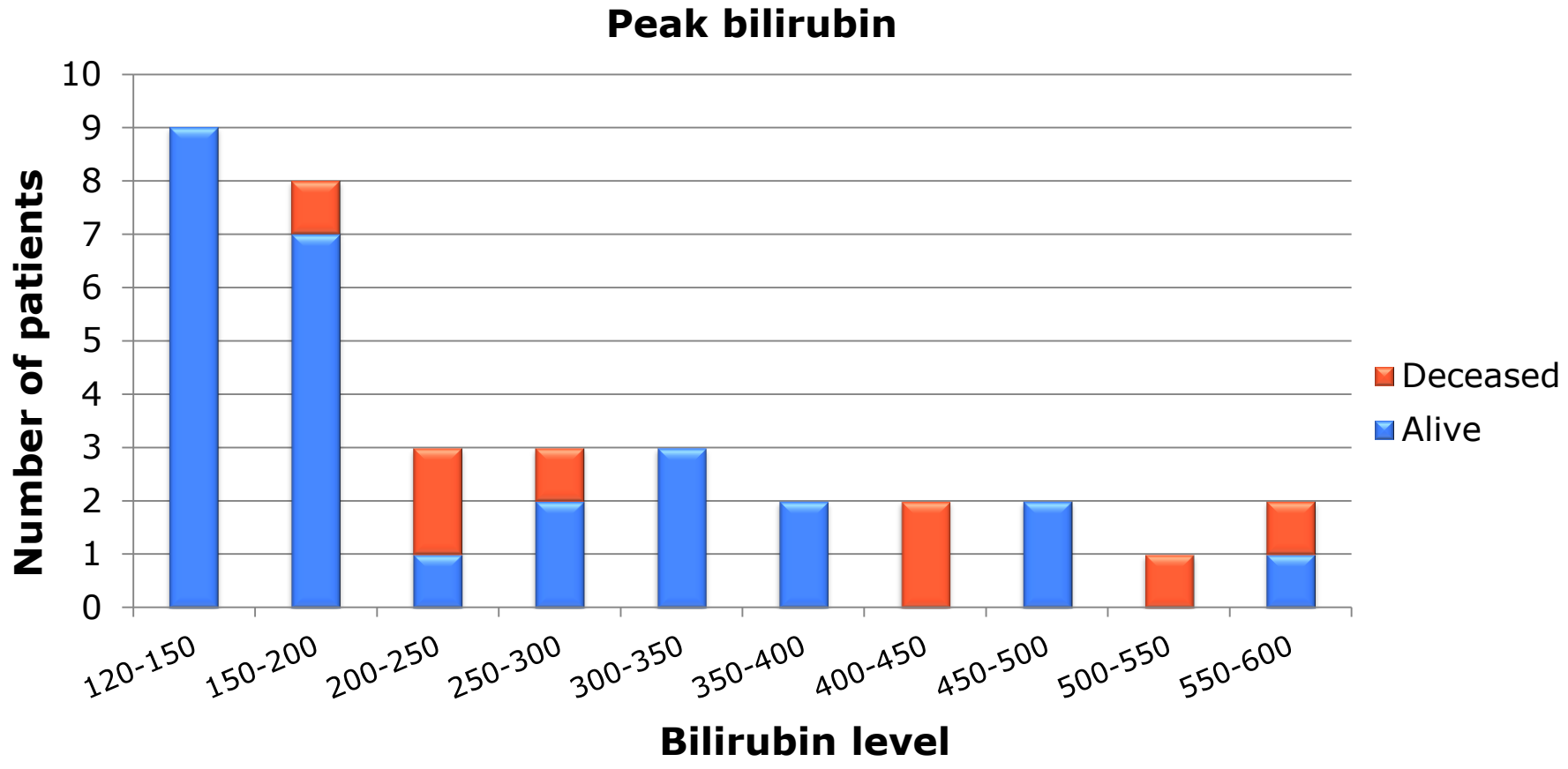
### Significant postoperative morbidity

Total n=956	
Sens	14.3%
Spec	100%
PPV	100%
NPV	77.3%

### Liver-related 90-day mortality

Total n=956	
Sens	34.8%
Spec	97.1%
PPV	22.9%
NPV	98.4%

# Validation of *Peak bilirubin*



## Risk factors for PLF

### ▪ Patient factors

- Co-morbidity
- Pre-existent liver disease
- Age > 65
- Male sex

### ▪ Peri-operative factors

- Excessive intra-operative blood loss or transfusion
- Added biliary or vascular procedures
- Long operative time

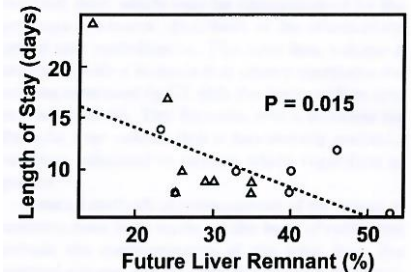
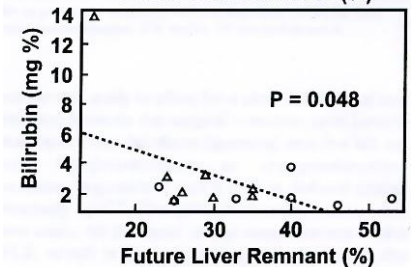
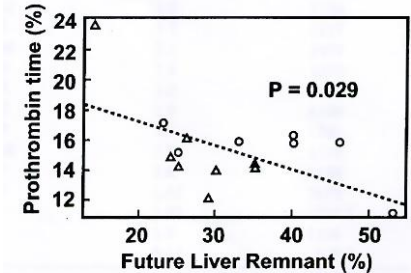
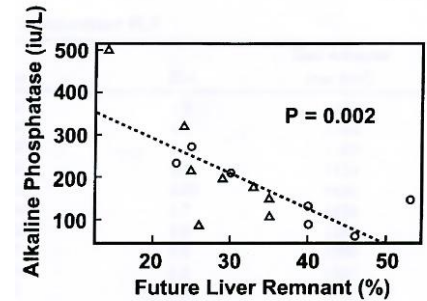
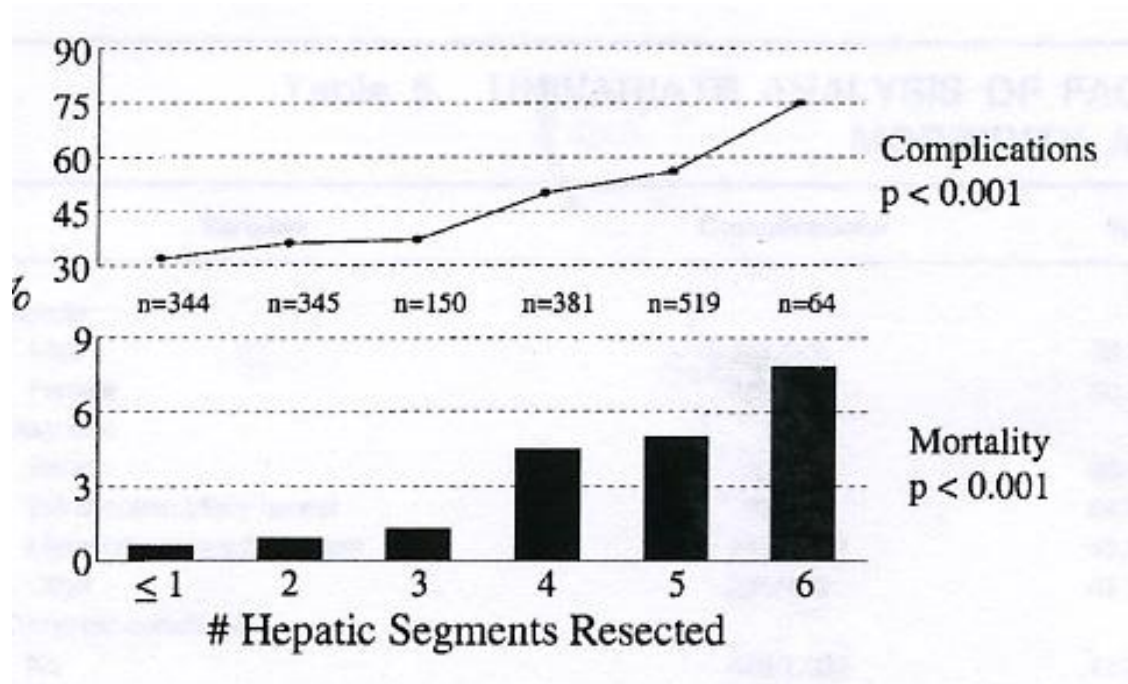
### ▪ Postoperative factors

- Infectious complications
- Insufficient remnant liver volume



# Pathogenesis of PLF - RLV

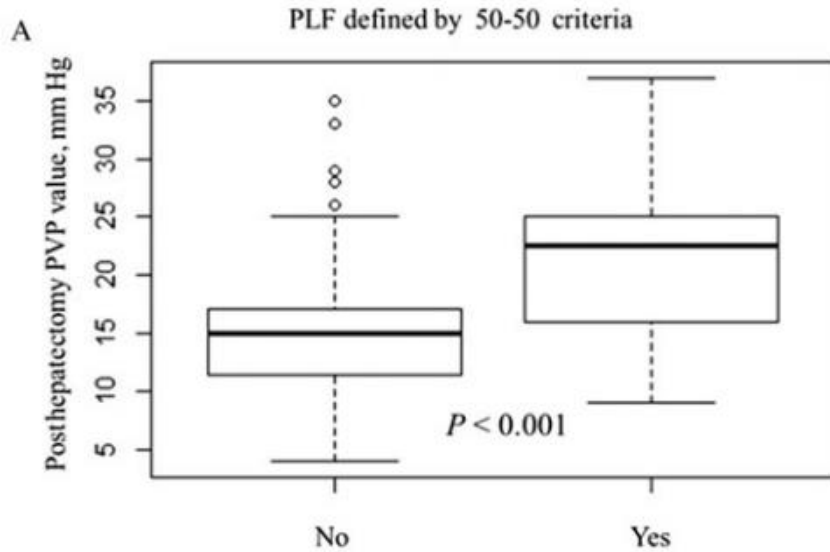
- Minimum amount of remnant liver volume (RLV)
  - RLV 25-30% → normal liver function
  - RLV >40% → impaired liver function



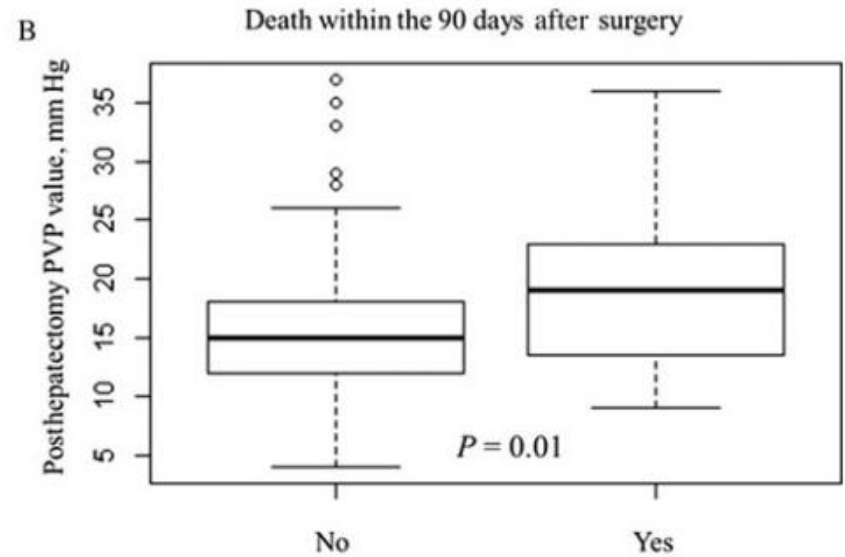
## Pathogenesis of PLF - hemodynamics

- **Hepatic haemodynamic imbalance**
  - Adaptive reduction of arterial blood flow through hepatic arterial buffer response
  - Increased portal flow and pressure after major hepatectomy increase the risk for PLF
  - Post-reperfusion portal hypertension in partial liver transplantation → sinusoidal injury and ↓NO

# Pathogenesis of PLF - hemodynamics



Mean (±SD)	14.9 (±5)	21.7 (±7)
Median (range)	15 (4–35)	22.5 (9–37)



Mean (±SD)	15.2 (±5)	19.6 (±7)
Median (range)	15 (4–37)	19 (9–36)

## Pathogenesis of PLF – immune response

- **Impaired liver innate immune defense**
  - Cytokine release by activated Kupffer cells hampered after major liver resection
  - Impaired phagocytic activity after major resection
  - Risk of infection increases with the extent of resection → majority of patients with hepatic dysfunction develops infectious complications

**Table 2** Hepatic dysfunction and infection following minor, standard, and extended liver resection

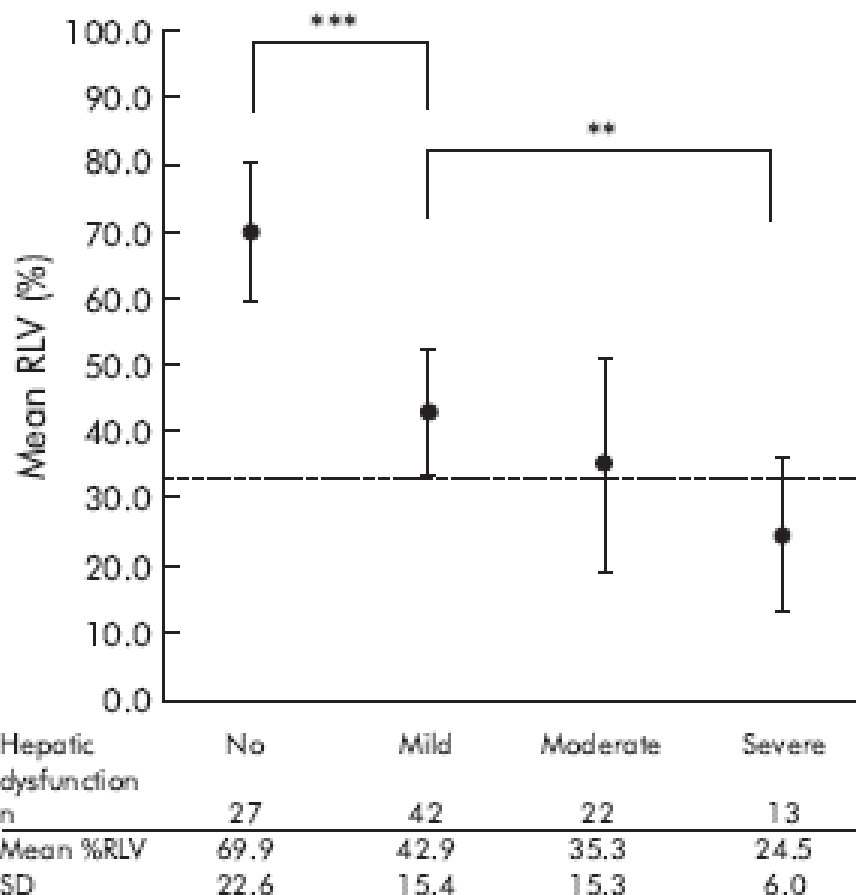
	Extent of liver resection		
	Minor (n = 20)	Standard (n = 57)	Extended (n = 27)
Postoperative hepatic dysfunction****			
No	17 (85.0)	9 (15.8)	1 (3.7)
Mild	3 (15.0)	28 (49.1)	11 (40.7)
Moderate	0	15 (26.3)	7 (25.9)
Severe	0	5 (8.8)	8 (29.6)
Infection***	3 (15.0)	14 (24.6)	16 (59.3)

\*\*\*p=0.001, \*\*\*\*p<0.0001 by Pearson  $\chi^2$ .

Values in parentheses are percentages of patients in each category by extent of liver resection.



## NUTRIM School of Nutrition and Translational Research in Metabolism

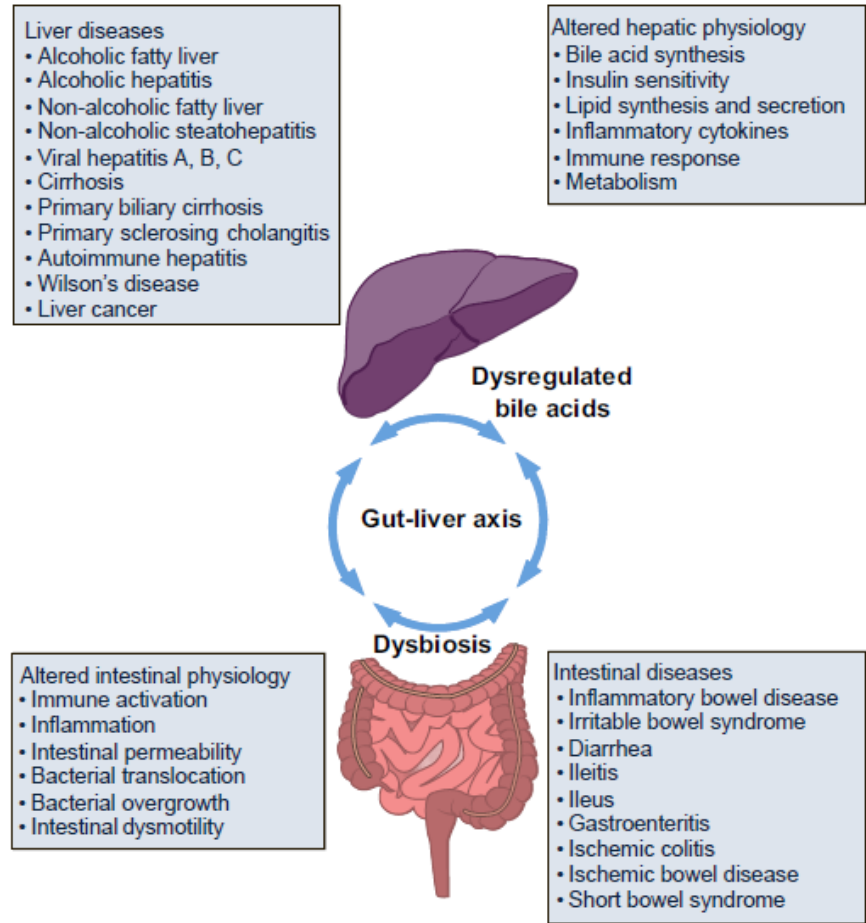


**Figure 3** Mean (SD) relative residual liver volume (%RLV) in patients with no, mild, moderate, and severe hepatic dysfunction following liver resection (one way between group ANOVA; \*\* $p=0.005$ , \*\*\* $p<0.0001$ ). Reference line indicates 33% RLV.

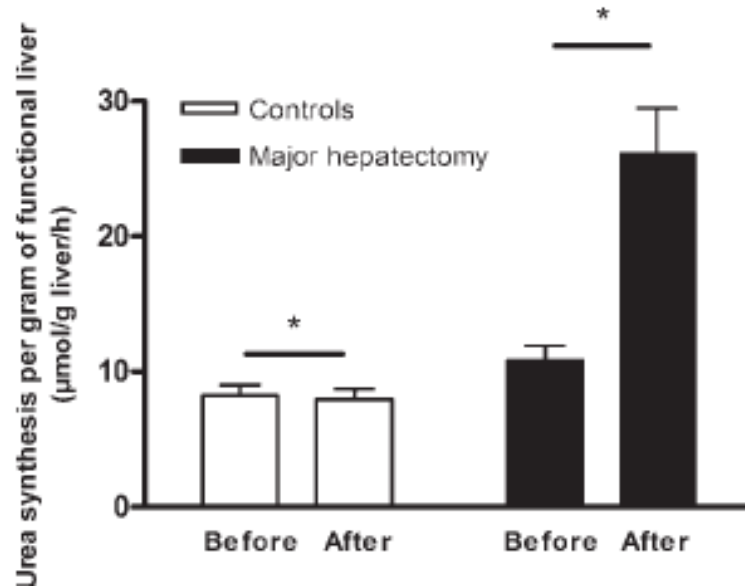
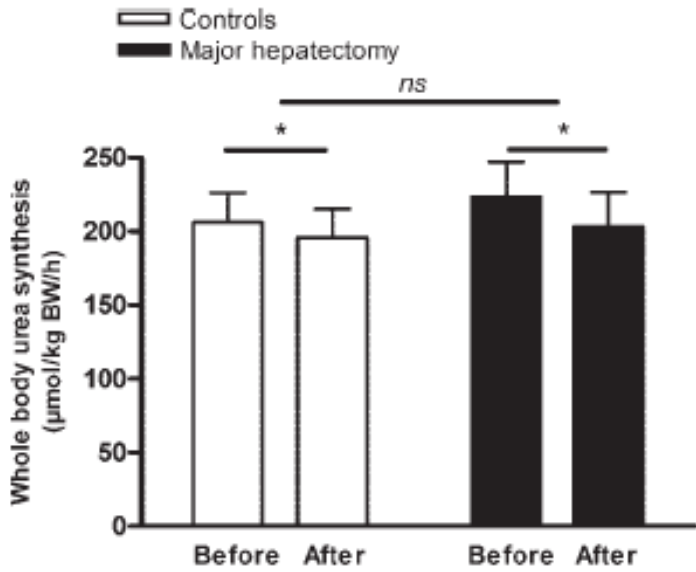
# Pathogenesis of PLF – gut microbiome

## ▪ Gut microbiome-gut-liver axis

- Failure of gut-derived endotoxins to reach the liver → impaired DNA synthesis
- Excessive levels of endotoxin can impair liver regeneration and cause mortality after extended hepatectomy



# Pathogenesis of PLF – urea synthesis



# Urea synthesis probably not limited

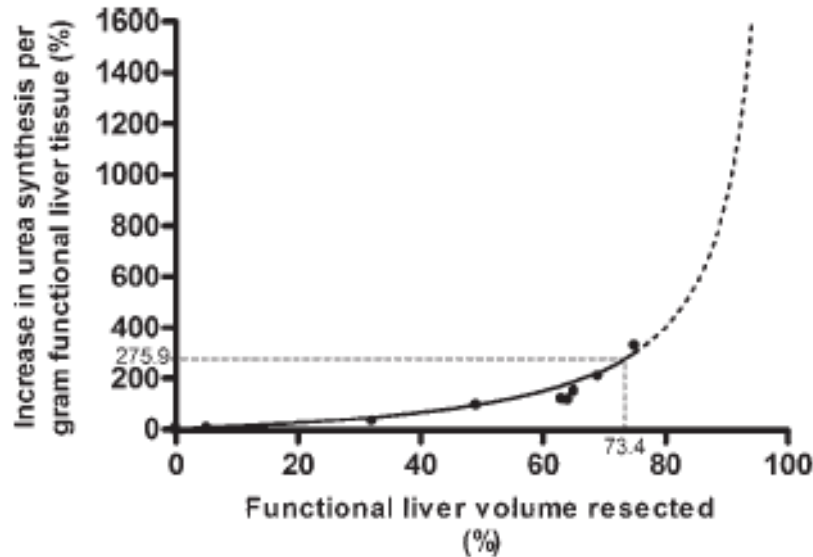
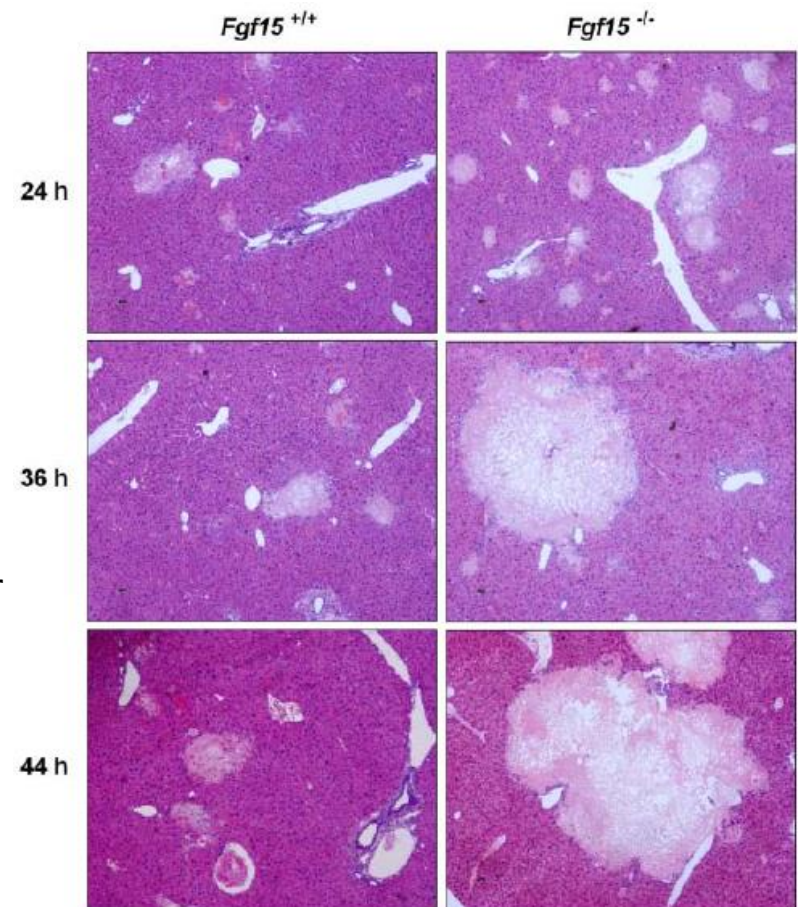


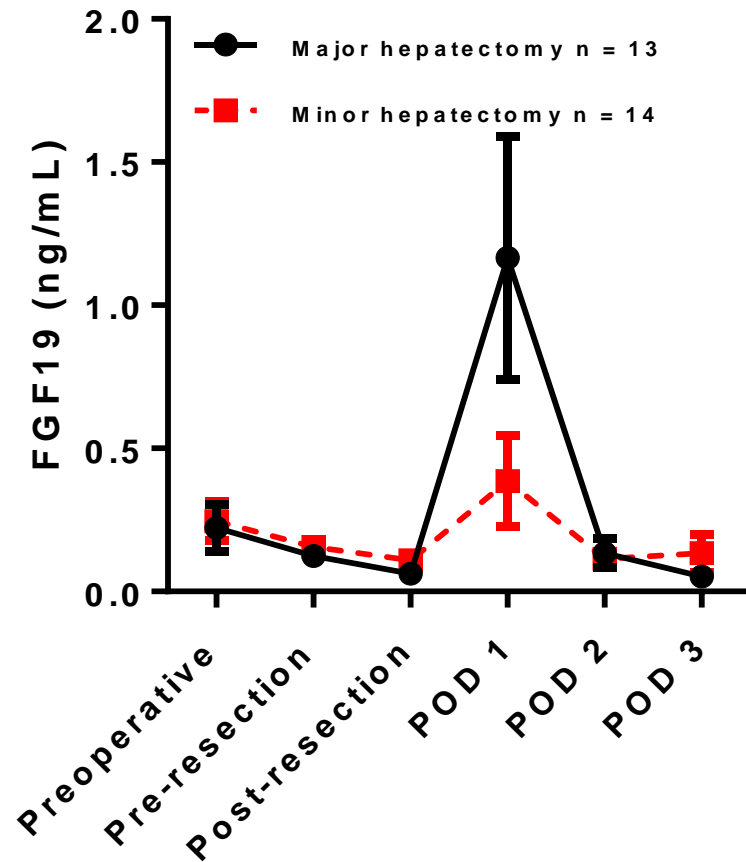
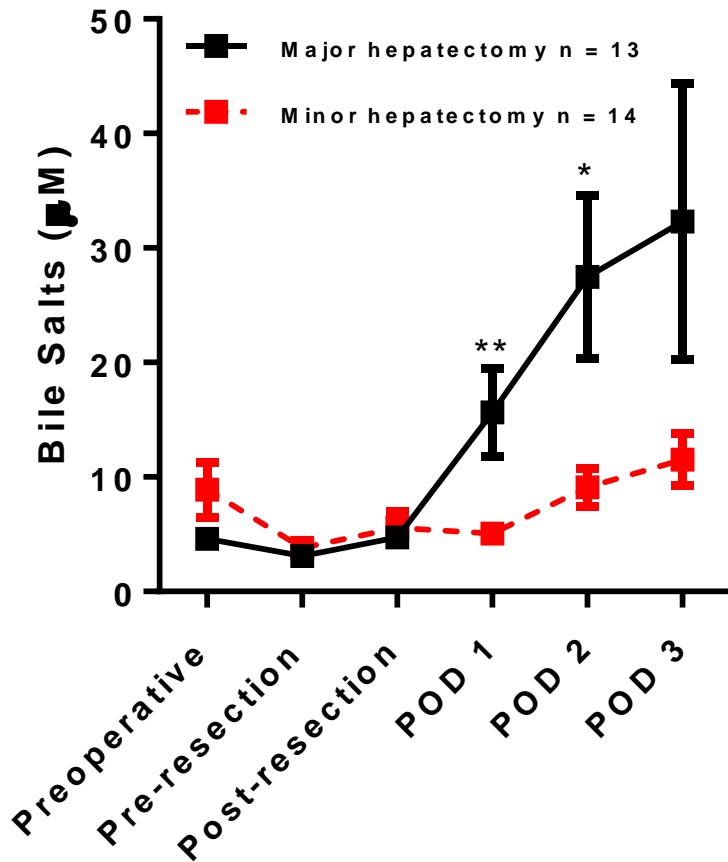
Fig. 7. Increase in urea synthesis/g liver in relation to the resected liver volume. Dots represent individual patients in the present study. From the theoretical prediction line, it can be conceived that beyond 70–80% hepatectomy the demanded functional adaptation increases exponentially, rapidly increasing the risk of liver failure. The value of 74.4% is derived from recent work from our group (25). In that study, a residual functional liver volume of 26.6% or less in patients with a normal liver was found to be predictive of liver insufficiency following hepatectomy. In this case, urea synthesis/g liver has to increase almost 300%.

## Pathogenesis of PLF – bile salts

- **Unmet hepatic metabolic demand**
  - Dysfunction of canalicular transporters → hepatic accumulation of bile salts (BS)
  - Stimulation of hepatic nuclear receptors involved in BS homeostasis and fibroblast growth factor 19 (Fgf19) signaling contribute to modulation of BS
  - Disruption leads to accumulation of toxic bile constituents → damaged internal hepatocellular membranes and apoptosis



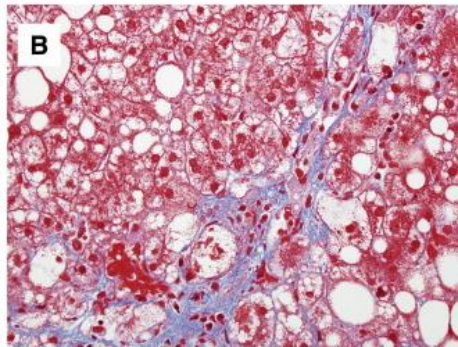
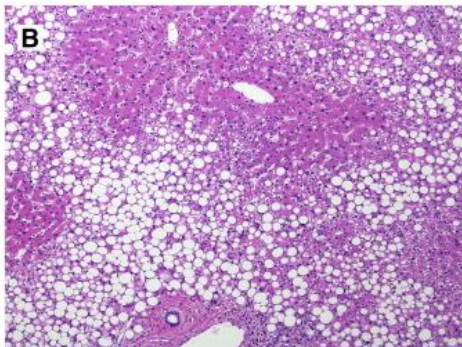
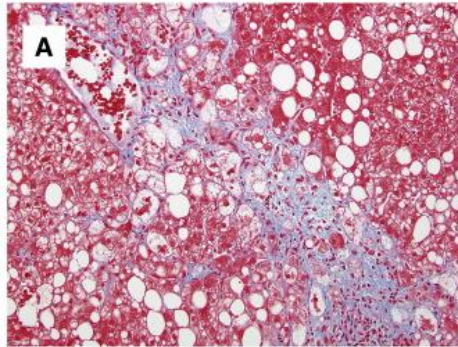
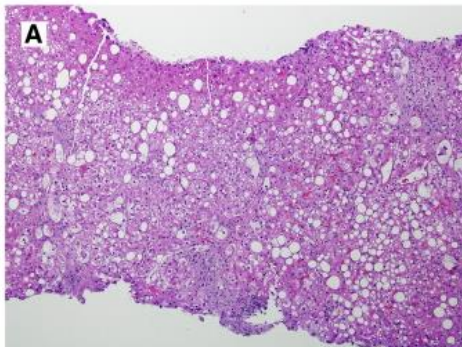
# Pathogenesis of PLF – bile salts



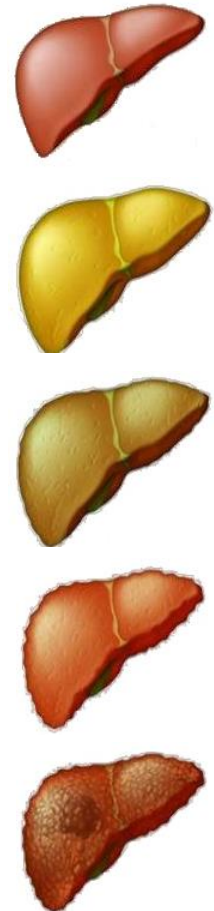
# Pathogenesis of PLF – liver disease

## ▪ NAFLD/NASH (CRLM, HCC)

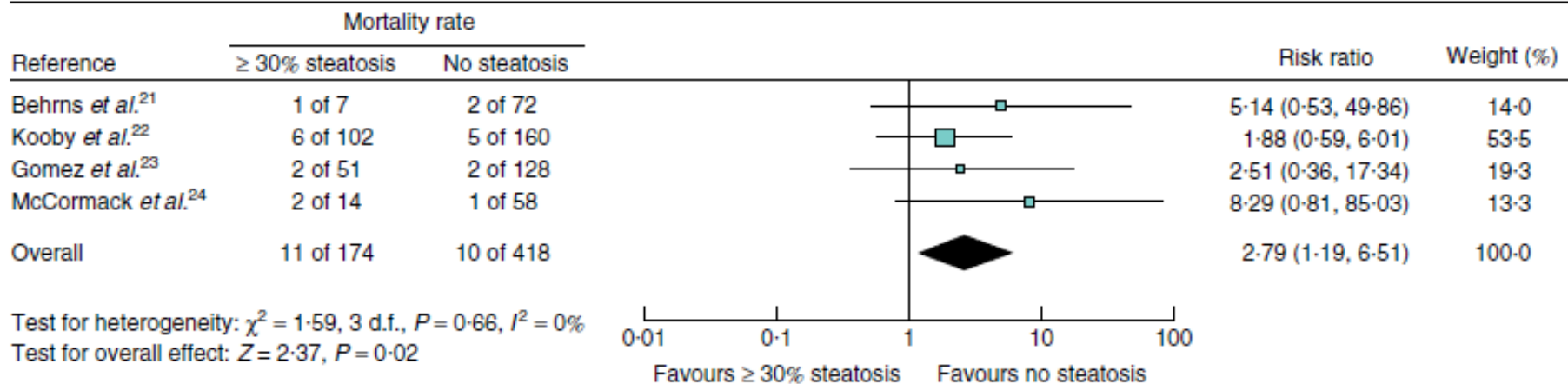
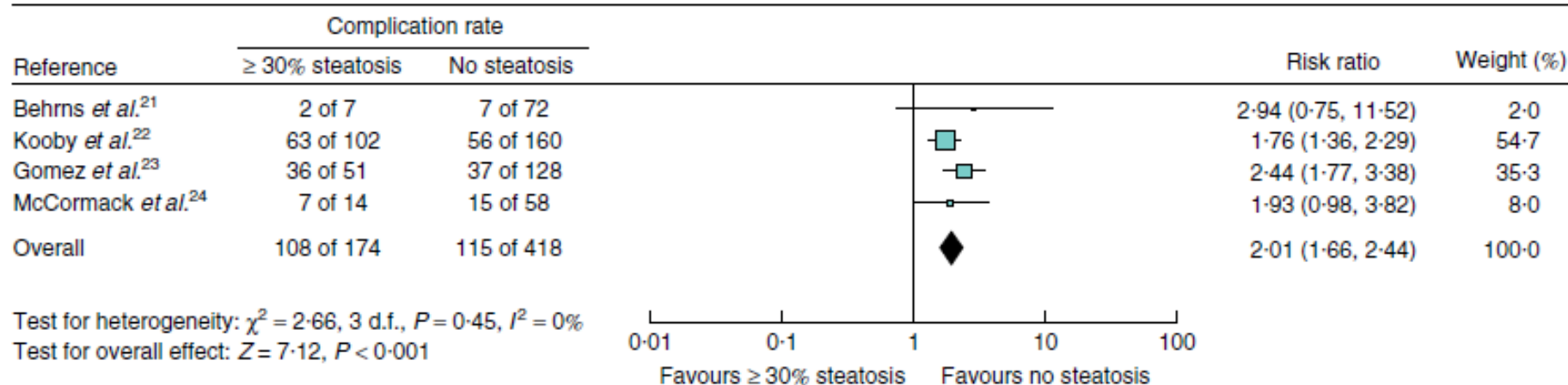
- Prevalence: ~20-30% of adults in Western population NAFLD, 3-5% NASH
- Risk factors for PLF and higher postoperative morbidity & mortality



*NASH without and with fibrosis*

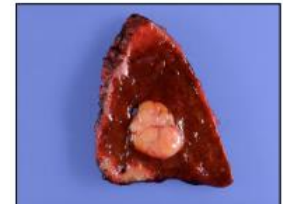


## Pathogenesis of PLF – liver disease





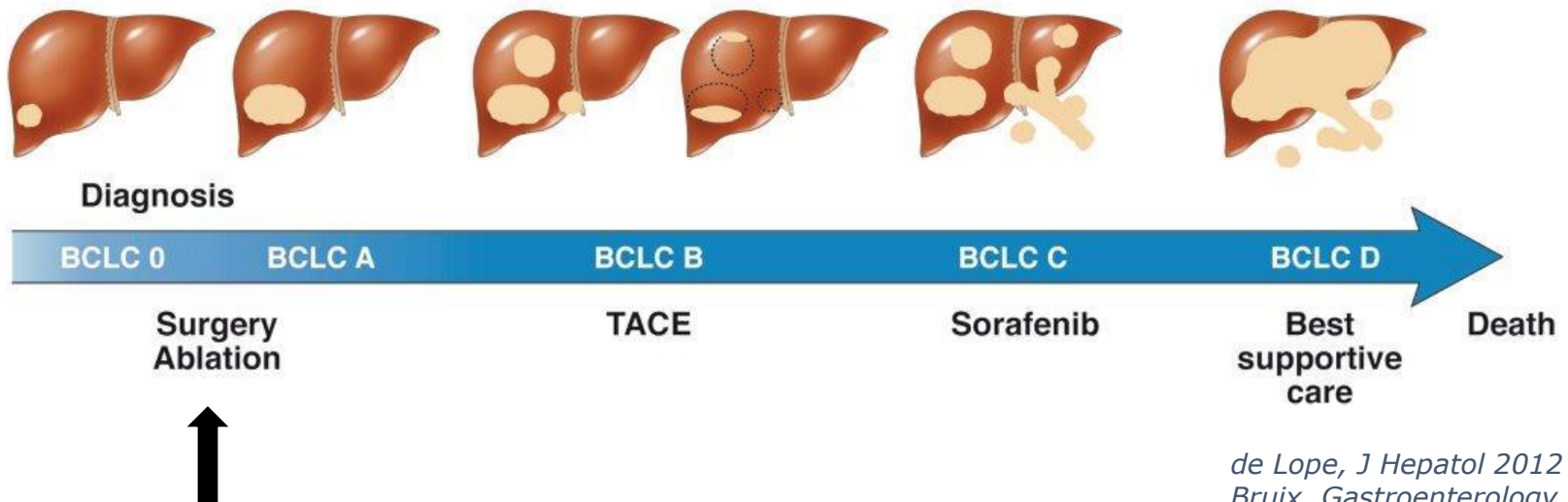
# Pathogenesis of PLF – liver disease



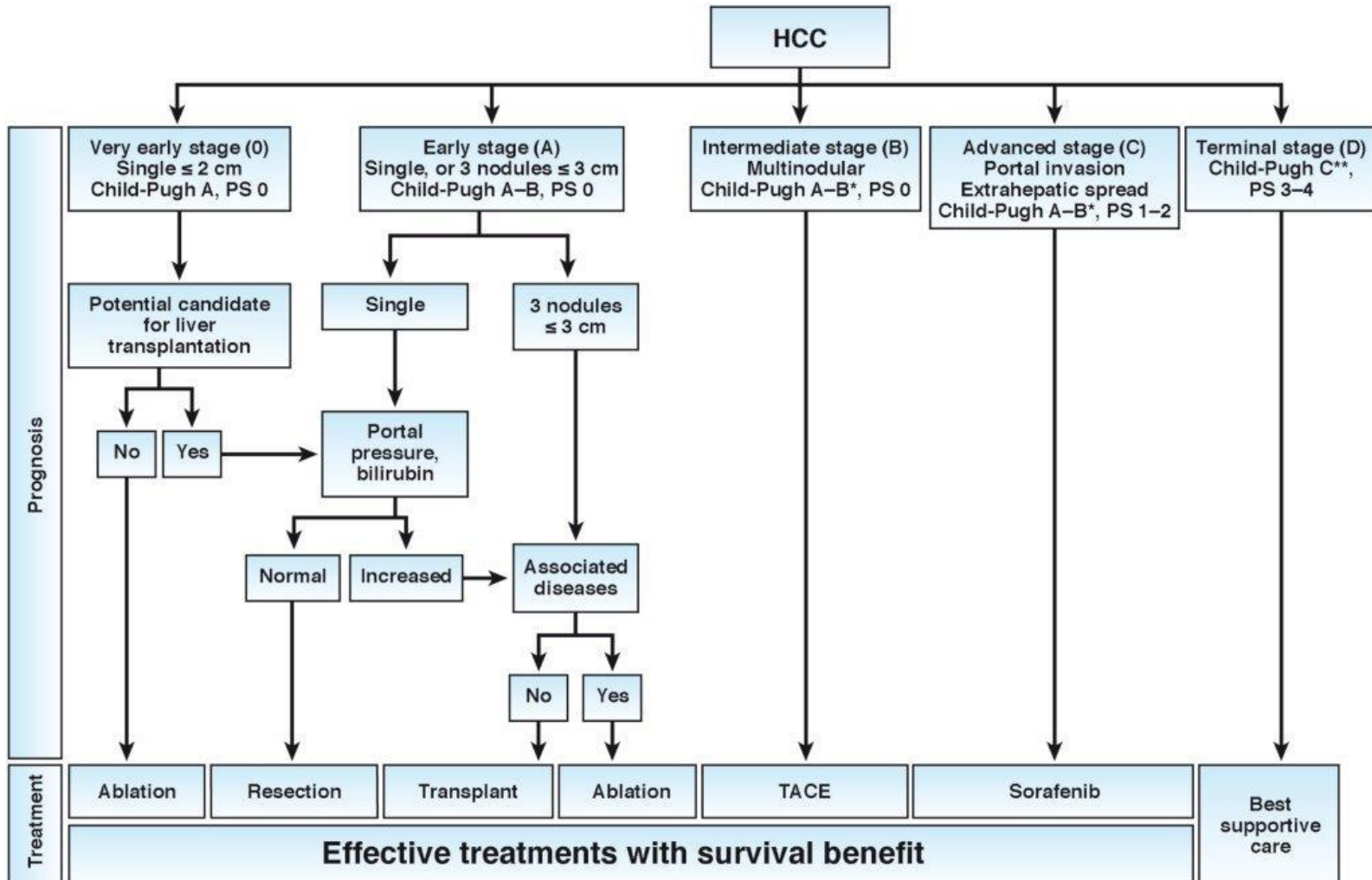
## ▪ Fibrosis and cirrhosis (HCC)

- Mostly related to chronic viral hepatitis or by progression of steatosis
- Mortality rate average (0-5%) due to strict patient selection & hepatic function assessment

• Therapy is decided according to tumor burden, liver function, and PS  
• Patients: Child-Pugh A/B, preserved ECOG PS, absence of severe comorbidities



# NUTRIM School of Nutrition and Translational Research in Metabolism



\*Note that Child-Pugh classification is not sensitive to accurately identify those patients with advanced liver failure that would deserve liver transplant consideration.

\*\*Patients with end stage cirrhosis due to heavily impaired liver function (Child-Pugh C or earlier stages with predictors of poor prognosis, high MELD score) should be considered for liver transplantation. In them, HCC may become a contraindication if exceeding the enlistment criteria.

## Pathogenesis of PLF – liver disease

- **Cholestasis (iCCA, pCCA)**
  - Resection for pCCA → PLF in 30% and mortality in 8-12% of patients
  - Resection for iCCA → few patients develop PLF and mortality in 1% of patients



## Pathogenesis of PLF – liver disease

- **Chemotherapy-associated liver injury (CALI)**
  - Sinusoidal obstruction syndrome (SOS, Oxaliplatin)
  - Chemotherapy-associated steatohepatitis (CASH, Irinotecan?)
  - Nodular regenerative hyperplasia

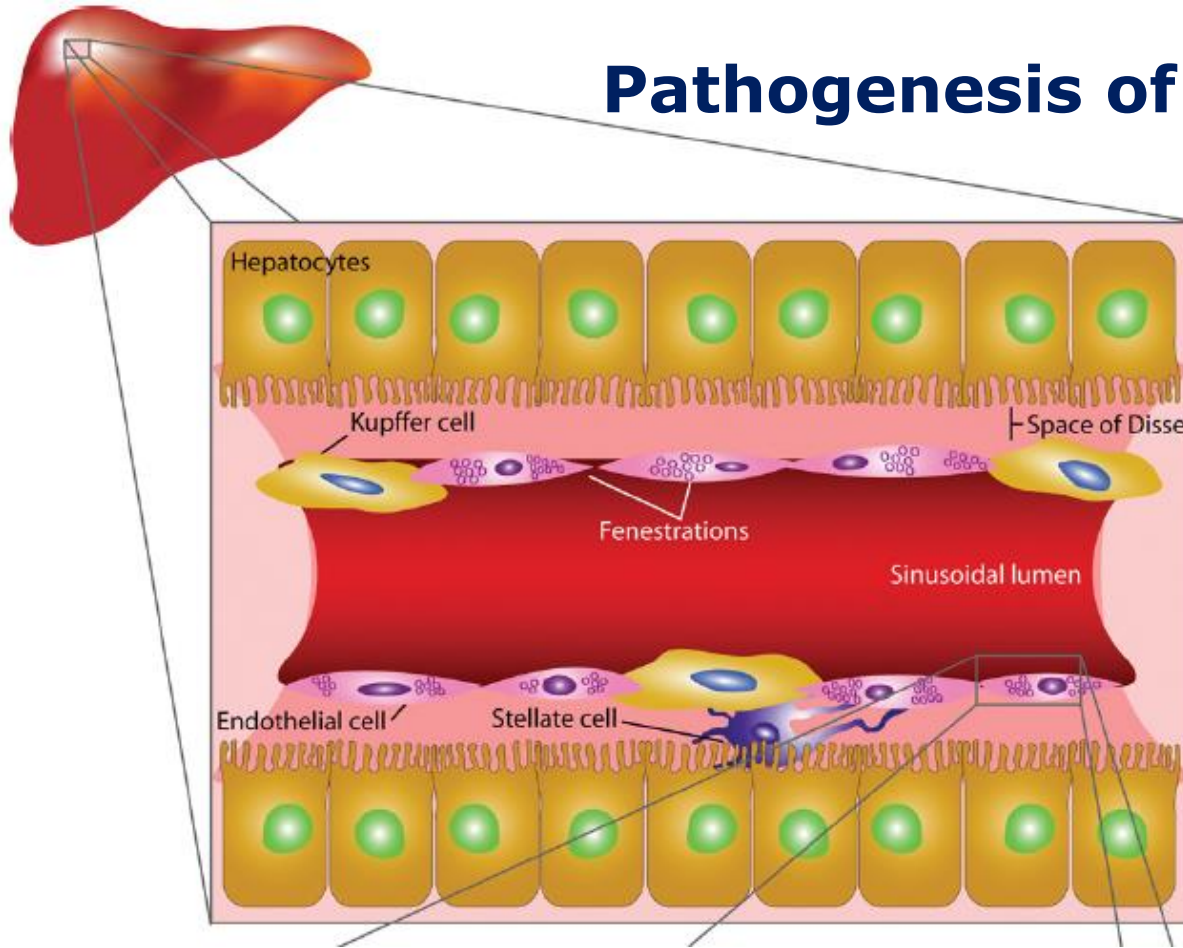


**Blue liver  
SOS**



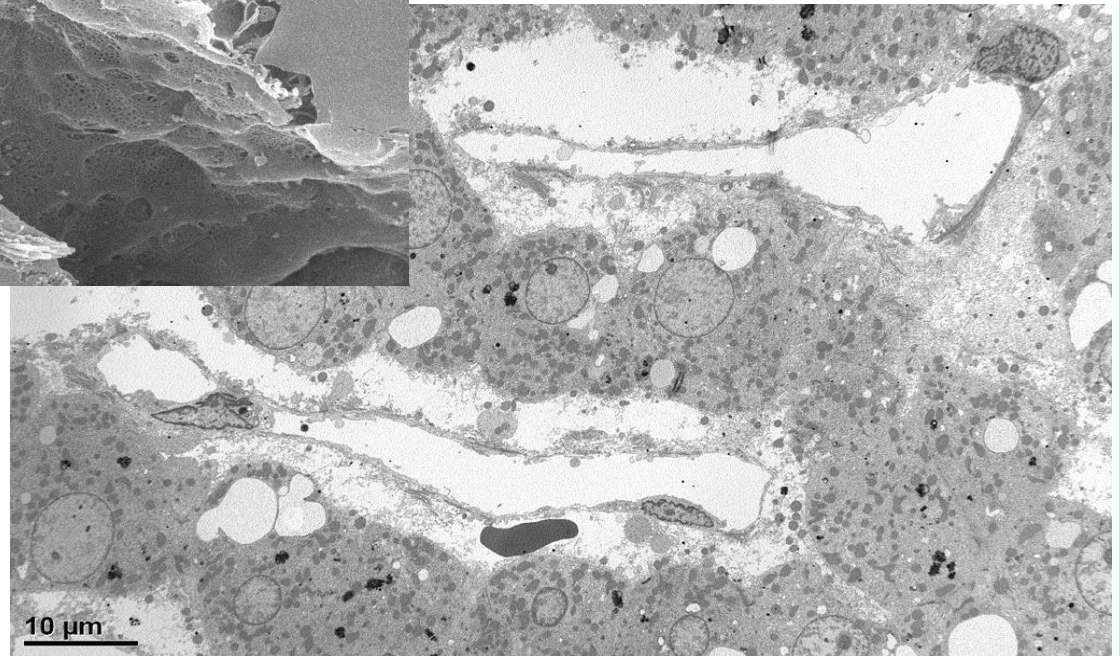
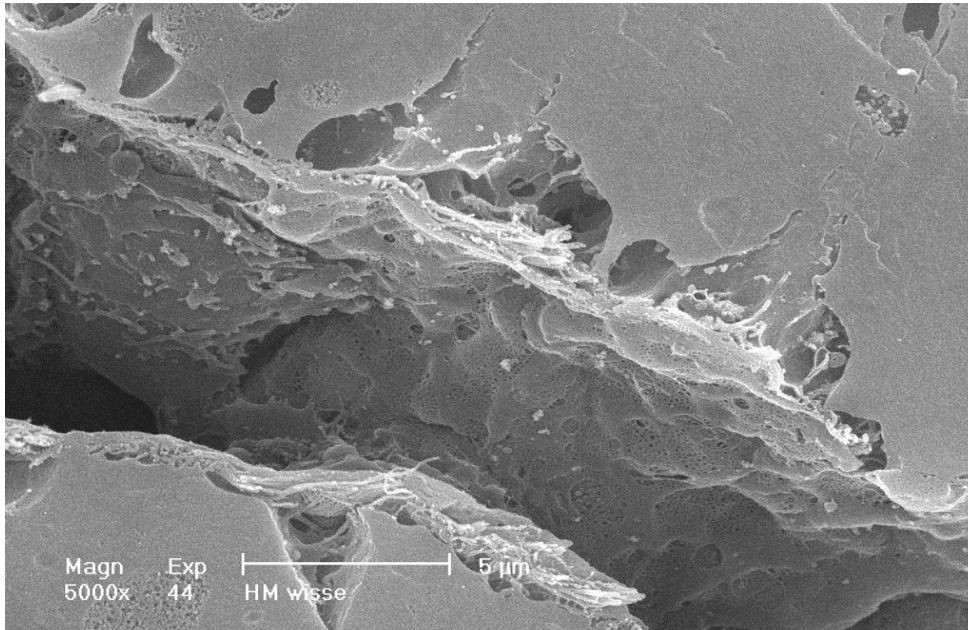
**Fatty "yellow" liver  
steatohepatitis**

## Pathogenesis of PLF – SOS

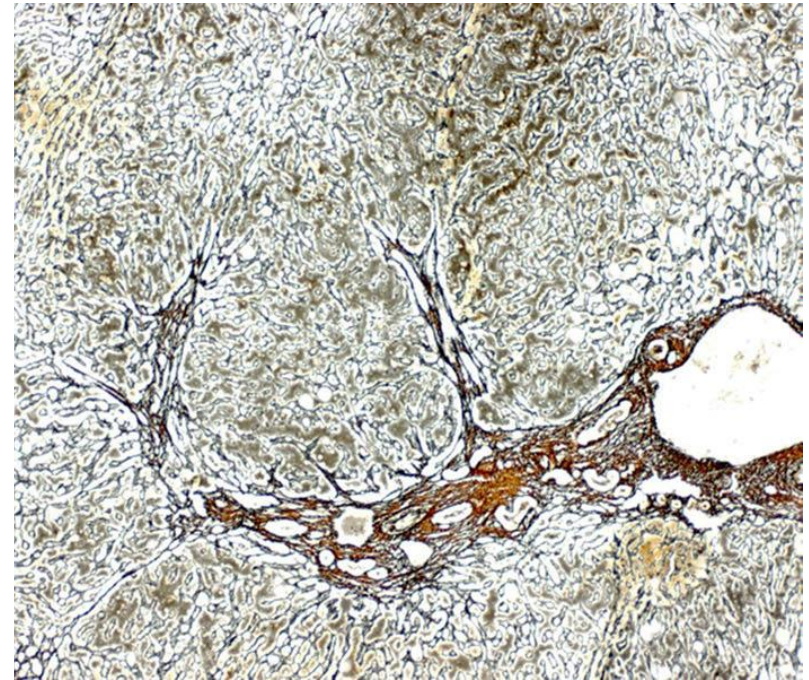
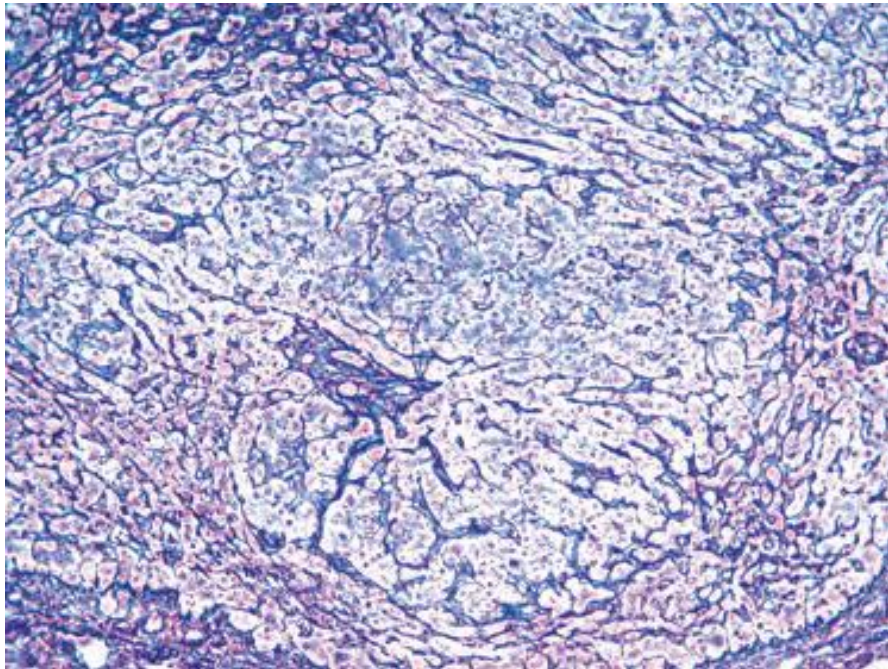


- Injury of sinusoidal endothelium → extravasation of RBCs → venous outflow obstruction → congestion → fibrotic changes

# Pathogenesis of PLF – SOS



# Nodular regenerative hyperplasia (NRH)



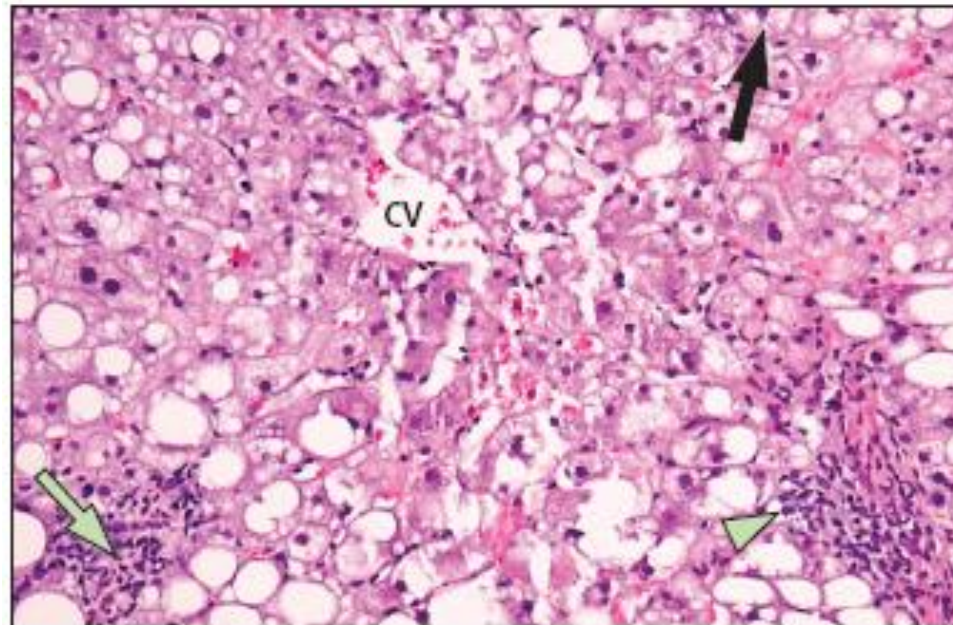
## Pathogenesis of PLF – NRH

- Prevalence of NRH increased after oxaliplatin administration (21.4 vs. 8.4 %,  $p = 0.003$ )
  - Prevalence reduced by addition of bevacizumab (11.7 vs. 19.8 %;  $p = 0.020$ )
- NRH is an independent predictor of PLF (9.2 vs. 2.3%,  $p = 0.021$ )
- In patients with grades 2-3 NRH, the rate of PLF was 14.3%
  - 25.0% after major hepatectomy

Most severe liver injury?



## Pathogenesis of PLF – CASH

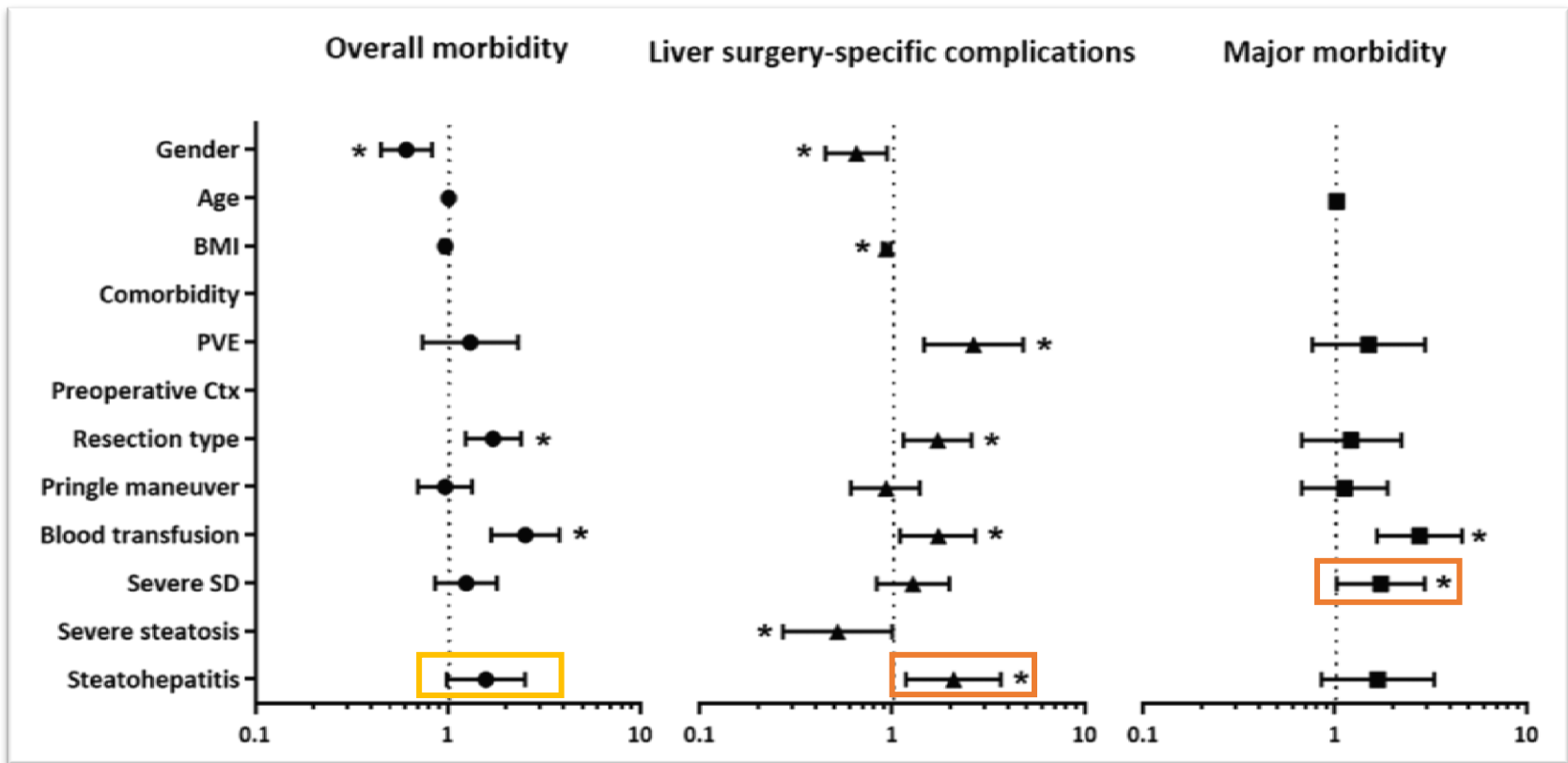


**Figure 3: Steatohepatitis**

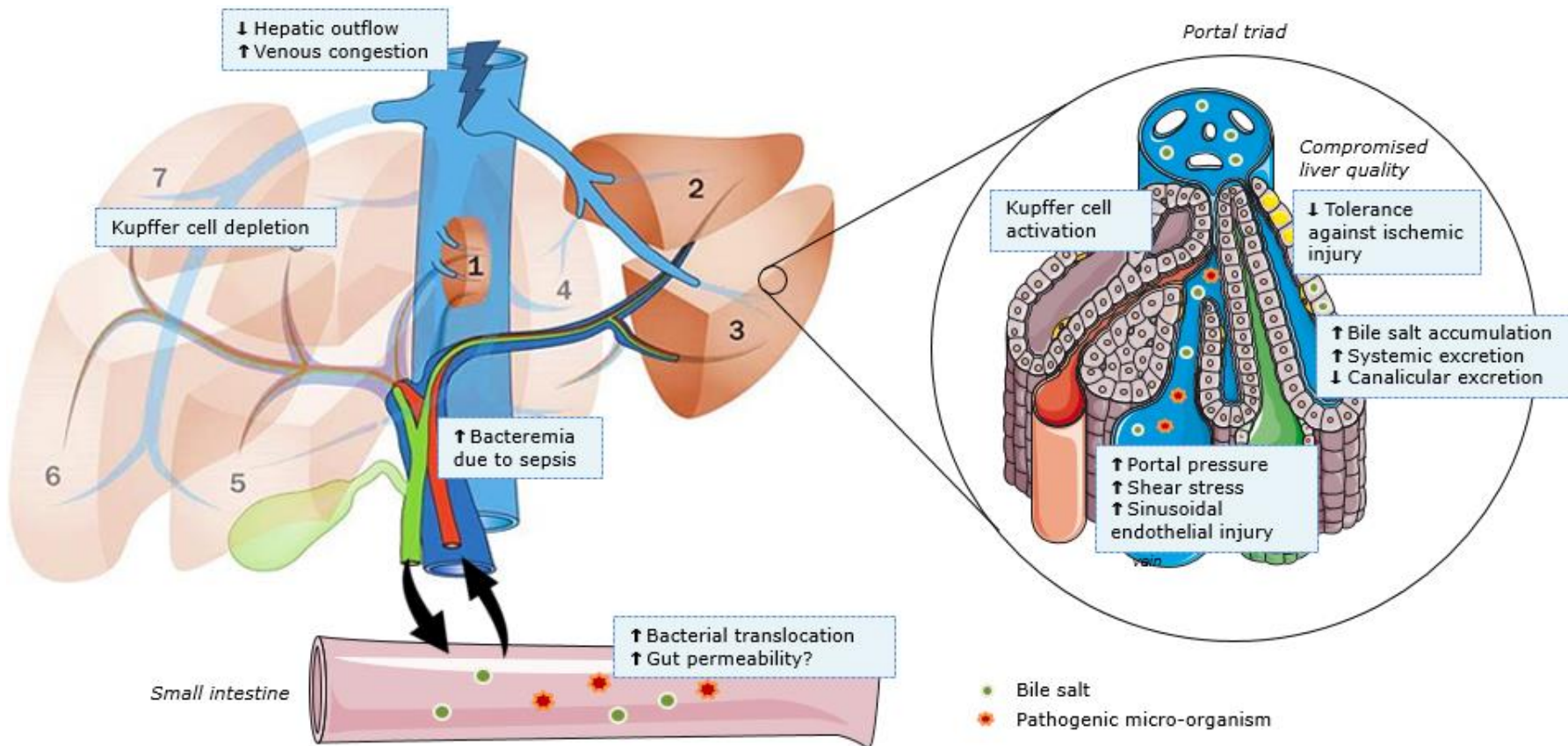
Moderate steatosis (40–50% of hepatocytes), hepatocyte-ballooning degeneration (black arrow), lobular inflammation (green arrow), and portal inflammation (green arrowhead). Kleiner score for non-alcoholic fatty liver disease is 6. CV=central vein. Stained with haematoxylin and eosin, magnification  $\times 200$ .

- Excess of fatty acids  $\rightarrow$  oxidation  $\rightarrow$  O<sub>2</sub> radicals  $\rightarrow$  second hit  $\rightarrow$  cellular death

# Pathogenesis of PLF – CALI



# Overview pathogenesis of PLF

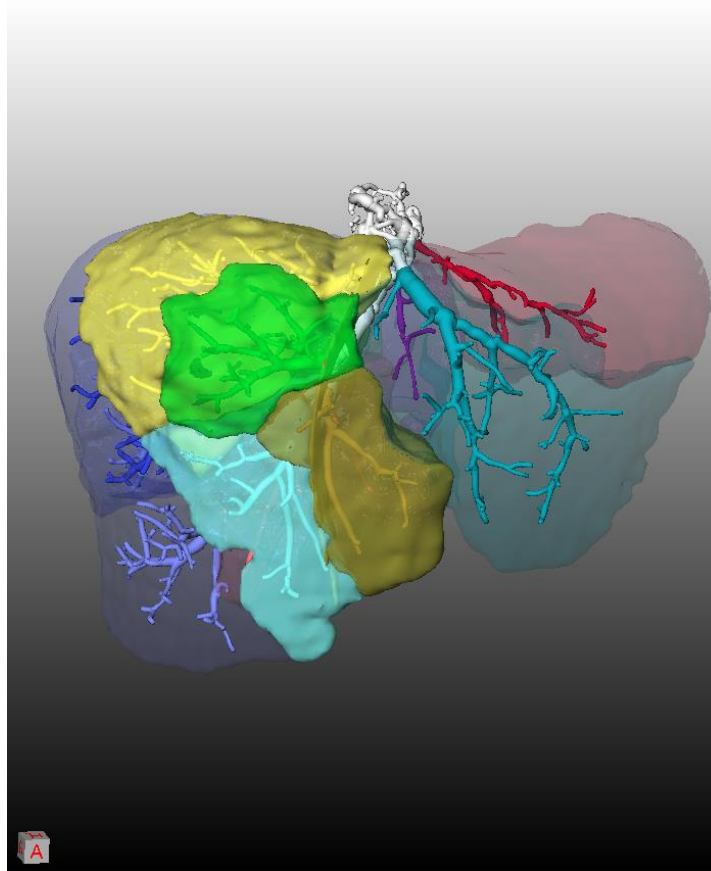


## Prevention

- Optimize preoperative liver function
  - Nutrition, fitness, biliary drainage in cholestasis, diet?
- Limit hepatic haemodynamic disbalance
  - Splenectomy and splenic artery ligation → activation hepatic arterial buffer response
- Provide optimal perioperative care
  - Prevent perioperative excessive blood loss, blood transfusion, hepatic manipulation
  - Low CVP (<5cm H<sub>2</sub>O)
  - Pringle-Manoeuvre

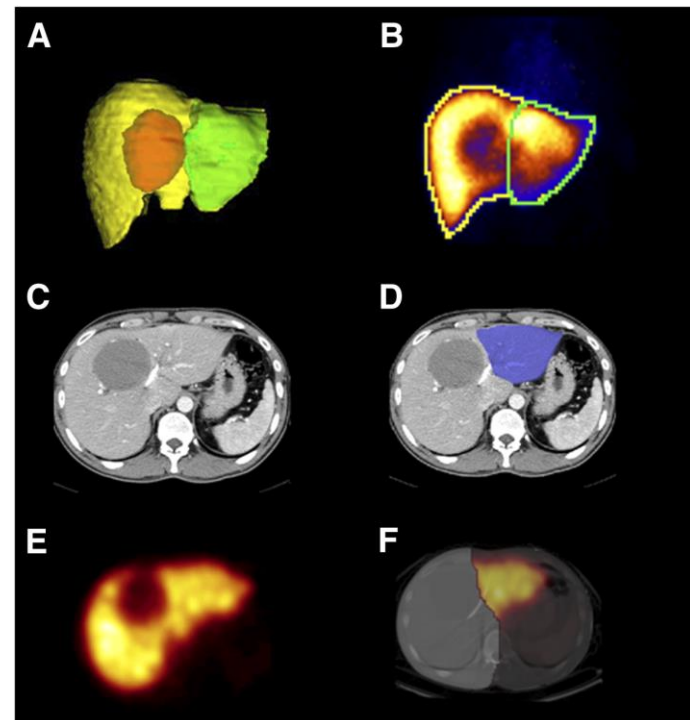
## Prevention - volumetry

- 2D volumetry – preoperative 3D modelling



## Prevention - functional tests

- Biochemistry
  - Secretory, synthetic and detoxifying function (bilirubin, INR, ALT, AST, ammonia, metabolites)
- Breath tests
  - LiMAx
  - ICGR-15
- Imaging
  - $^{99m}\text{Tc}$ -labeled GSA liver scintigraphy
  - $^{99m}\text{Tc}$ -mebrofenin hepatobiliary scintigraphy with SPECT
  - Gadolinium-enhanced MRI



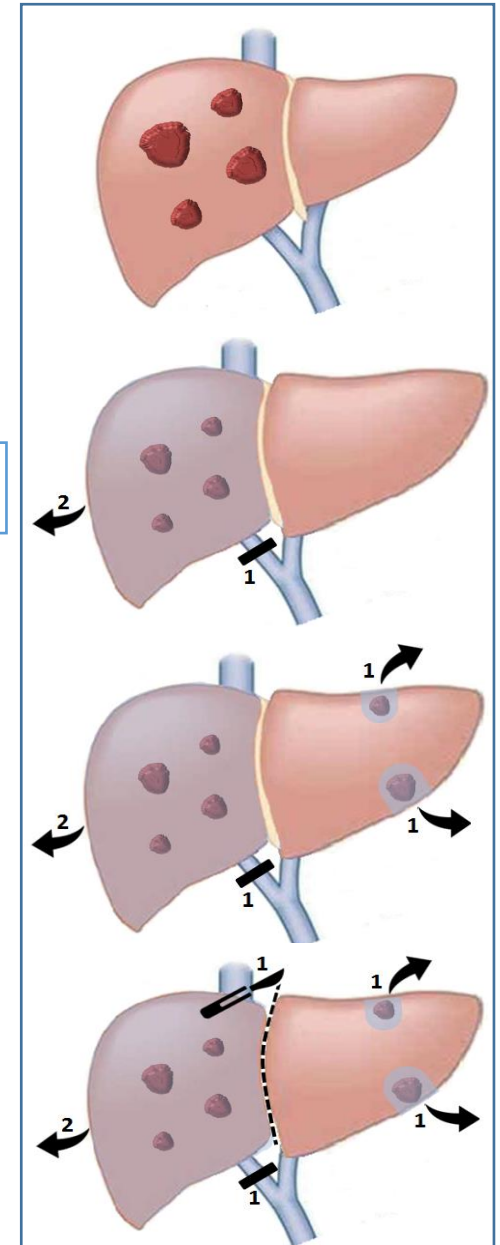
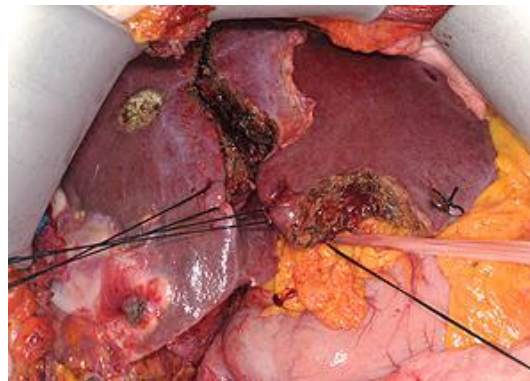
# Prevention – liver enlargement

- Enlarge remnant liver volume
  - Portal vein embolization
  - Two-stage hepatectomy
  - ALPPS

## ALPPS registry

Severe morbidity: 28%  
Mortality: 9%

1 = tempus 1  
2 = tempus 2



## Current therapies

- Goal-directed therapy

**Table 3.** Goal-directed therapy in patients suffering from post-resectional liver failure

Circulatory disturbances	CVP 8–12 mmHg MAP 65–90 mmHg Haematocrit $\geq 30\%$ Pulmonary capillary wedge pressure $\leq 12$ –15 mmHg
Renal dysfunction	Urine output $\geq 0.5$ mL/kg/h
Ventilatory dysfunction	Arterial oxygen saturation $\geq 93\%$ Central venous oxygen saturation $\geq 70\%$
Hepatic encephalopathy	Improvement to grade $\leq 2$
Coagulopathy	In case of bleeding Platelet count $\geq 50 \times 10^9/L$ International standardized ratio $\leq 1.5$
Malnutrition	Enteral energy supply of 2000 kcal/day

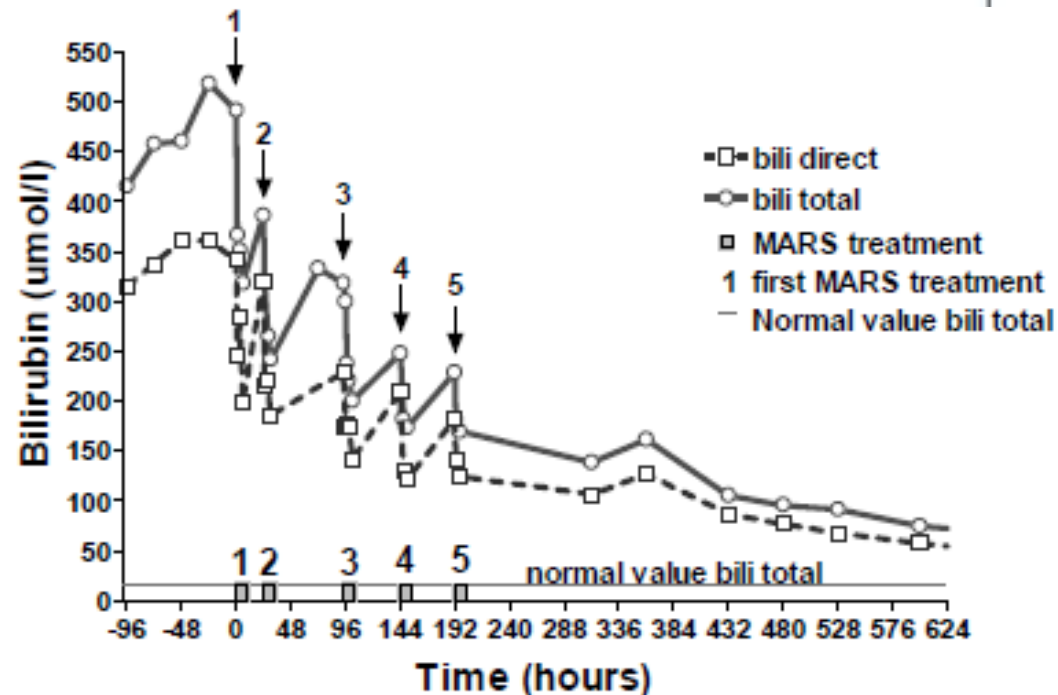
CVP, central venous pressure; MAP, mean arterial pressure.



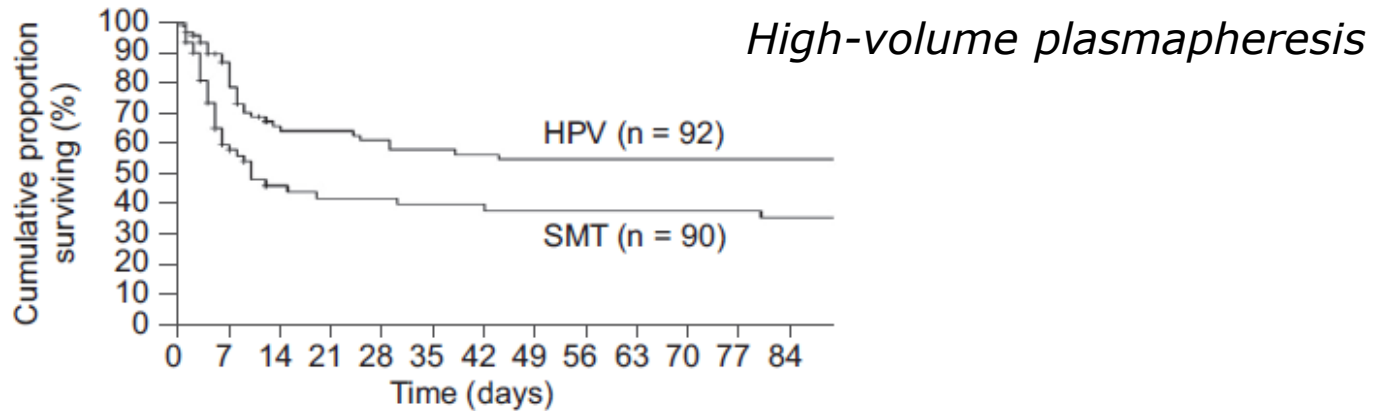
## Current therapies

- **Functional support**
- Molecular absorbent recirculation system (MARS)
- Extracorporeal bio-artificial liver devies (BAL)

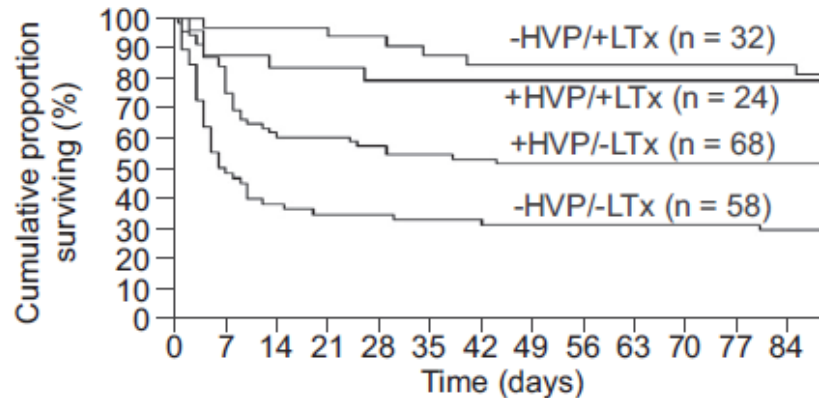
- Extracorporeal high-flux hemodialysis with albumin dialysis (Prometheus)
- High-volume plasmapheresis



## NUTRIM School of Nutrition and Translational Research in Metabolism



**Fig. 1.** Main results of the intention-to-treat analysis survival data in the standard medical treated group (SMT) compared to the high-volume plasma exchange (HVP) treated group (LogRank:  $p = 0.0058$ ).



**Fig. 2.** Survival in the groups, in the two groups receiving SMT (standard medical treated group) with and without emergency transplantation ( $-HVP/+LTx$  vs.  $+HVP/+LTx$ ) and the two group receiving SMT with and without emergency transplantation ( $-HVP/-LTx$  vs.  $+HVP/-LTx$ ) (LogRank:  $p = 0.0058$ ) and Cox proportional hazard: LTx:  $p < 0.0001$ ; HVP:  $p = 0.0076$ ).

# Current therapies

- Rescue liver transplantation → Not often performed, however in Norway:

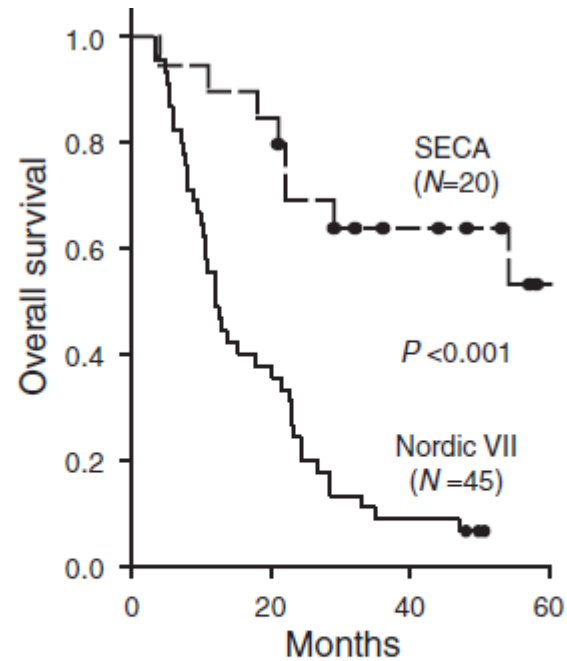
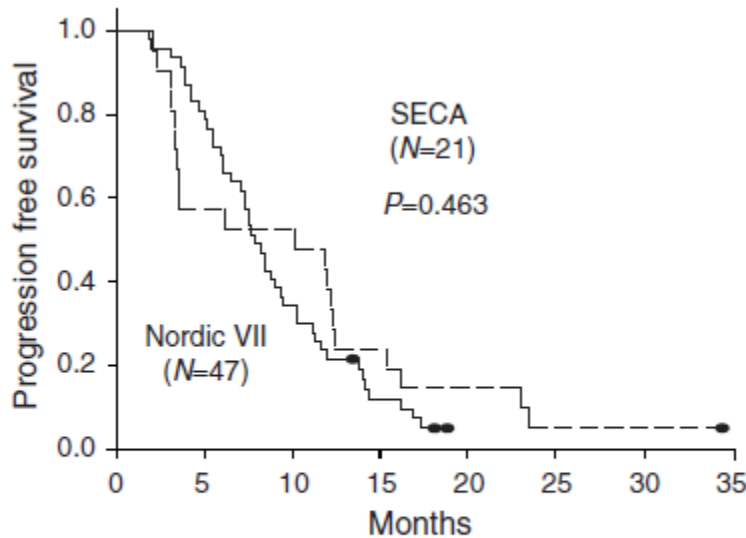
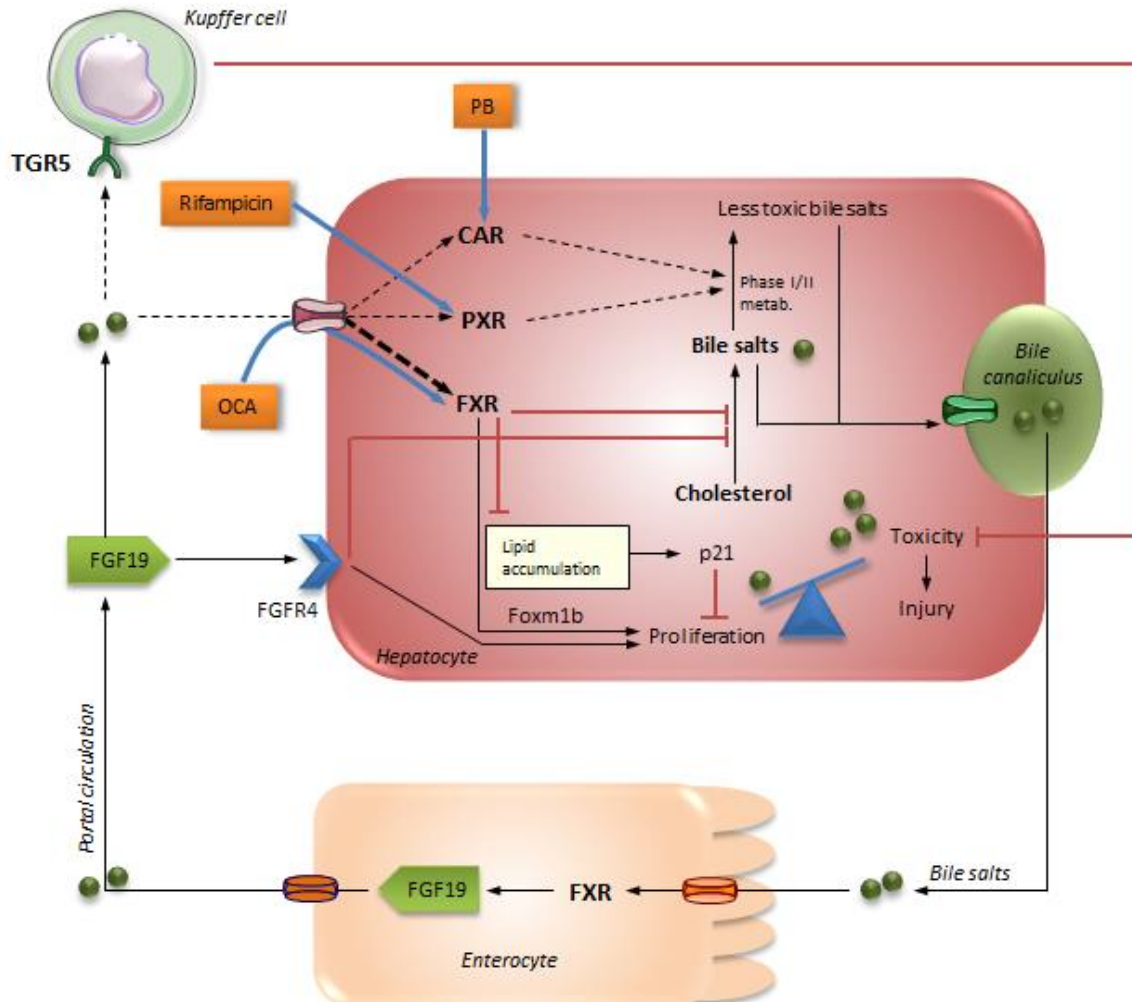


FIGURE 1. PFS for patients included in the liver transplantation group (SECA study, hatched line, n = 21) and the chemotherapy group (NORDIC VII study, solid line, n = 47).

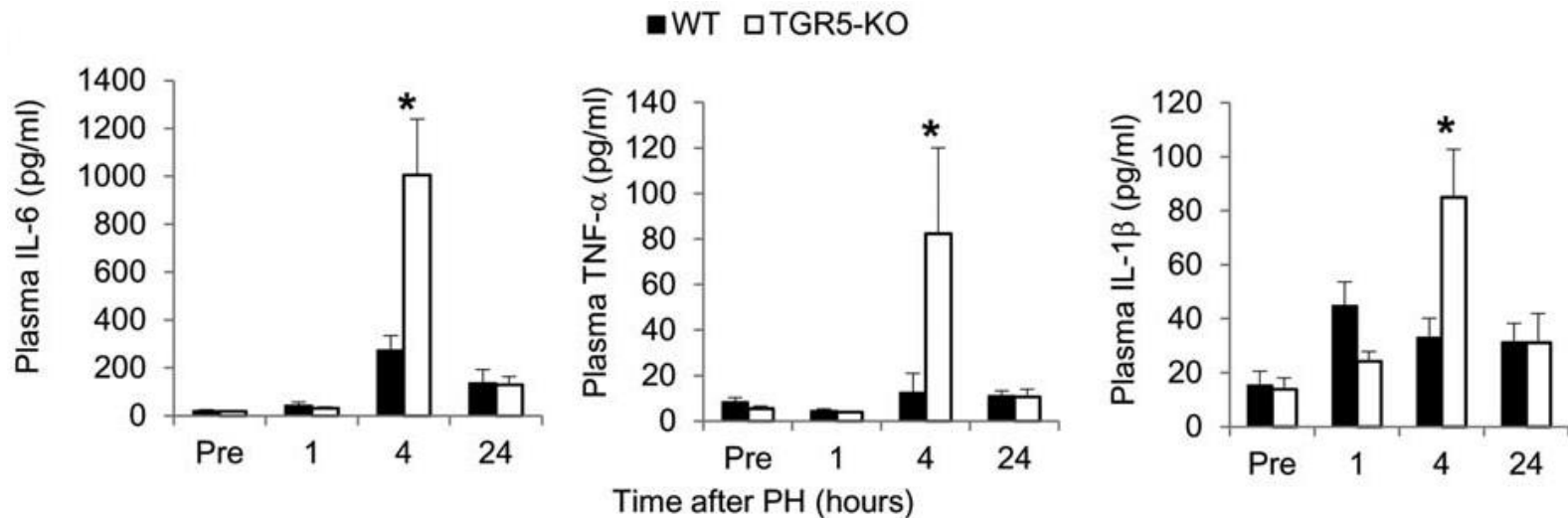
FIGURE 3. Kaplan-Meier OS curve from time of progressive disease for patients included in the liver transplantation group (SECA study, hatched line, n = 20) and the chemotherapy group (NORDIC VII study, solid line, n = 45, 2 patients with similar OS and PFS were excluded from analysis).

# Future therapies



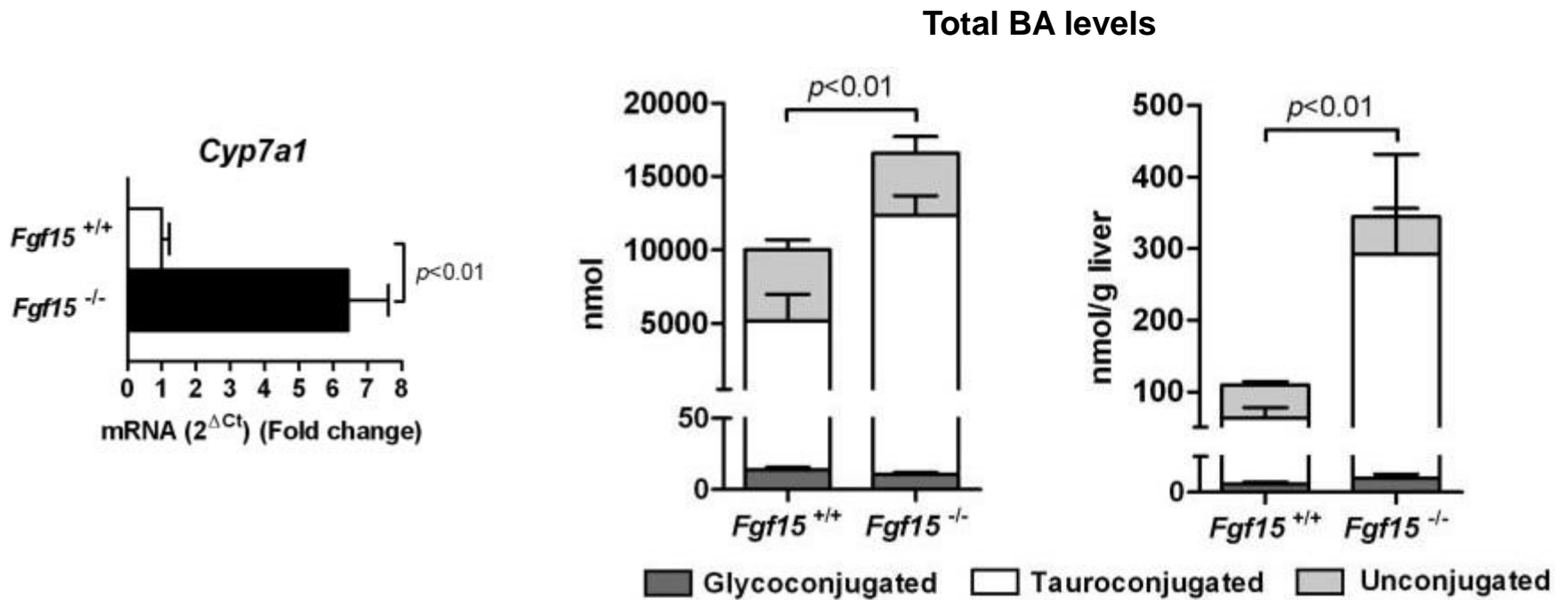
## Regenerative medicine – TGR5

### TGR5 protects from bile acid overload during liver regeneration



- *TGR5* KO mice after 2/3 PH → increased inflammation

# Regenerative medicine – Fgf15

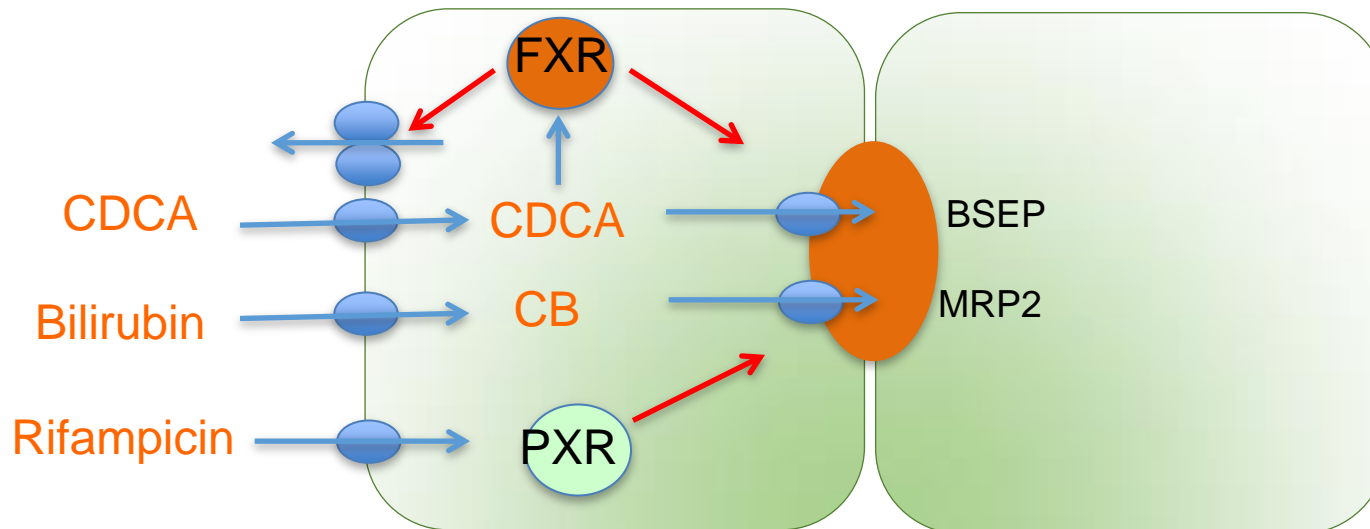


*Fgf15* KO mice after 70% PH:

- Increased Cyp7a1
- Increased total and intrahepatic bile acid levels

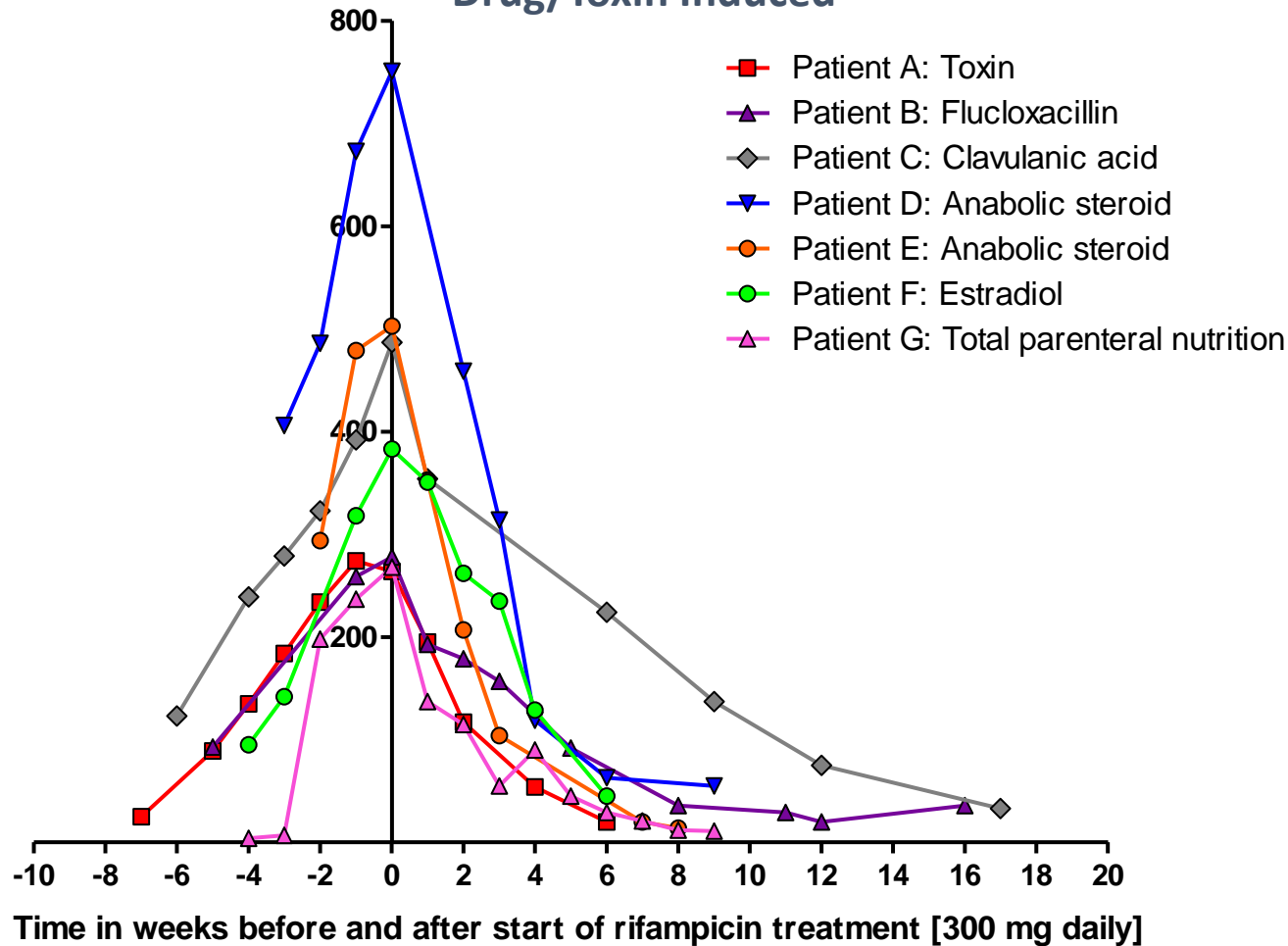
## Regenerative medicine – PXR

- Member of nuclear receptor family
- Activated by bile acids
- Controls hepatic drug detoxification by promoting phase I and II reactions
- Phase III elimination of compounds including bilirubin and bile salts



# NUTRIM School of Nutrition and Translational Research in Metabolism

## Severe Persistent Hepatocellular Secretory Failure Drug/Toxin Induced





# Acknowledgements

Maastricht

Kees Dejong

Frank Schaap

Peter Jansen

Liyanne vd Laarschot

Kiran Koelfat

**Kim van Mierlo**

Maartje van den Broek

UCL, London

Liver Unit

Rajiv Jalan

Surgery

Max Malago, Dipok Dhar

UCL, Brussels

Liver Unit

Isabelle Leclercq

AMC, Amsterdam

Liver Unit

Ulrich Beuers, Peter Jansen

Surgery

Thomas van Gulik



**Thank you for your attention**